

Edge Hill University

Getting Started with Adobe Premiere Rush

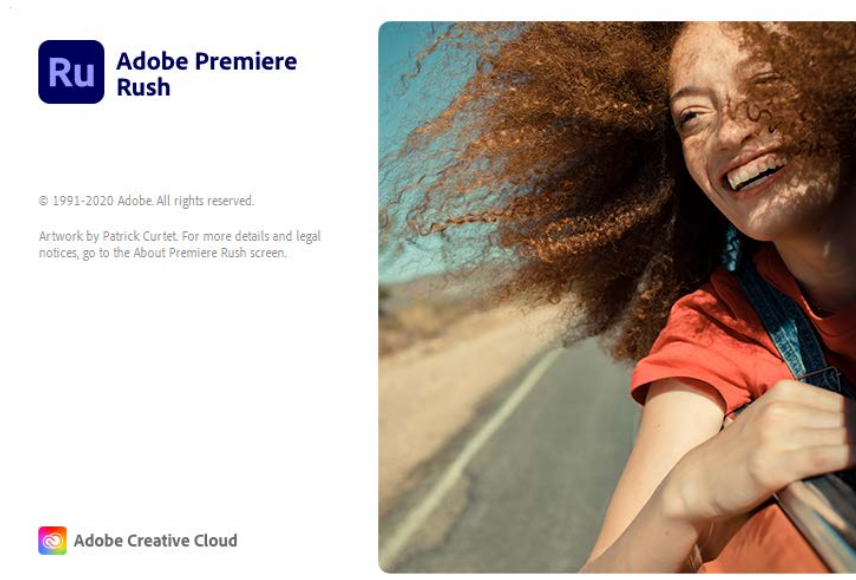
Contents

Introduction to Adobe Premiere Rush.....	2
Open Premiere Rush and sign in to Adobe Creative Cloud	3
Select the media import location and create a new project (6 steps)	4
Navigate to the recorded media location.....	6
Select required media, name and create the project.....	7
Edit media in the timeline.....	8
Re-order clips in the timeline.....	9
Trim a clip.....	10
Split a clip	11
Duplicate a clip.....	12
Add a title.....	13
Add a transition.....	14
Add colour effects.....	15
Speed up or slow down playback	16
Adjust audio	17
Crop or rotate a clip	18
Export settings	19
Create the new video file.....	20
Check and create a backup copy of the video file	21

Introduction to Adobe Premiere Rush

Adobe Premiere Rush is part of the Adobe Creative Cloud suite which incorporates well known professional applications **used for media creation and editing** such as Photoshop and Premiere Pro.

Adobe Premiere Rush is relatively **easy to use video editing application** and project files saved in Premiere Rush can also be opened with Premiere Pro if advanced features are required.



Access Adobe Premiere Rush on any student desktop PC in **Edge Hill University Catalyst** building.

The 1-minute interactive tour facility provided in the Help section of the Adobe Premiere Rush application is also recommended for first time users.

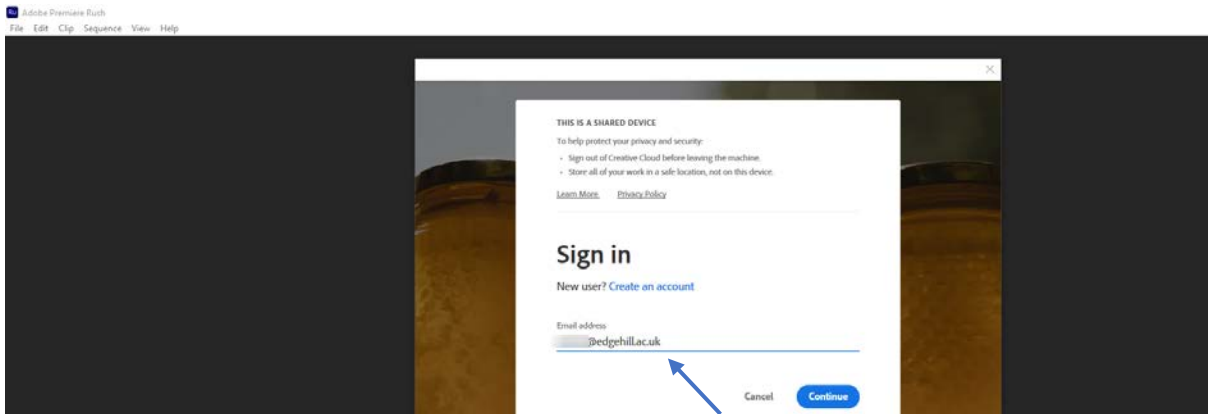


Open Premiere Rush and sign in to Adobe Creative Cloud

Click the Windows key to display the Applications menu then select the Adobe Premiere Rush icon.



Sign in to Adobe Creative Cloud with Edge Hill University credentials.

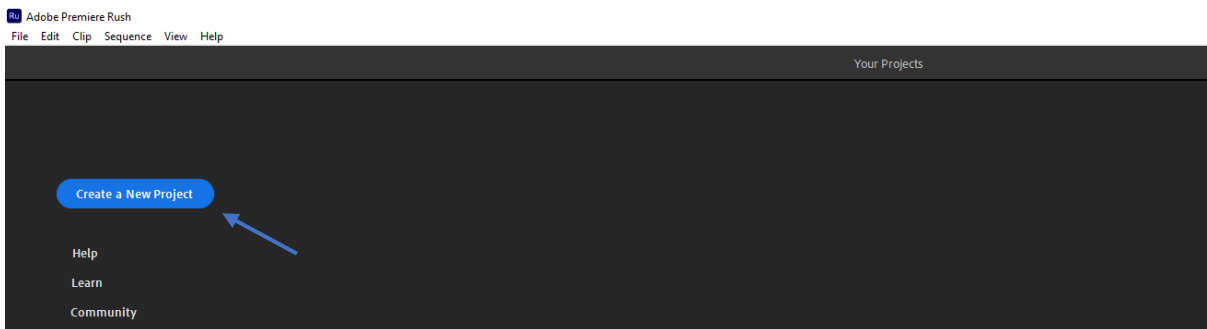


Select the media import location and create a new project (6 steps)

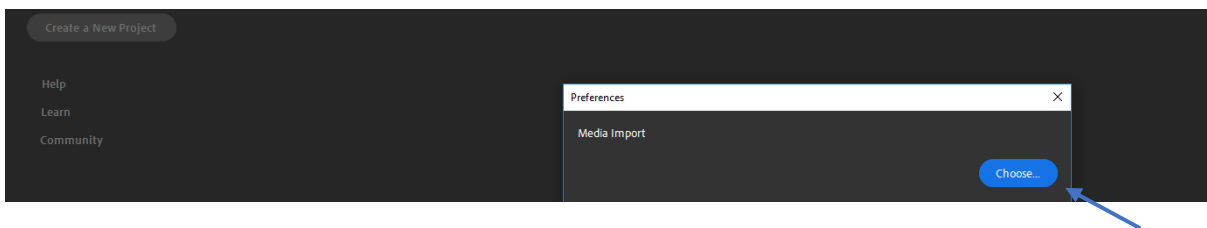
1. Important! First check the Microsoft OneDrive icon in the task bar is solid blue - this confirms OneDrive is ready and available for use.



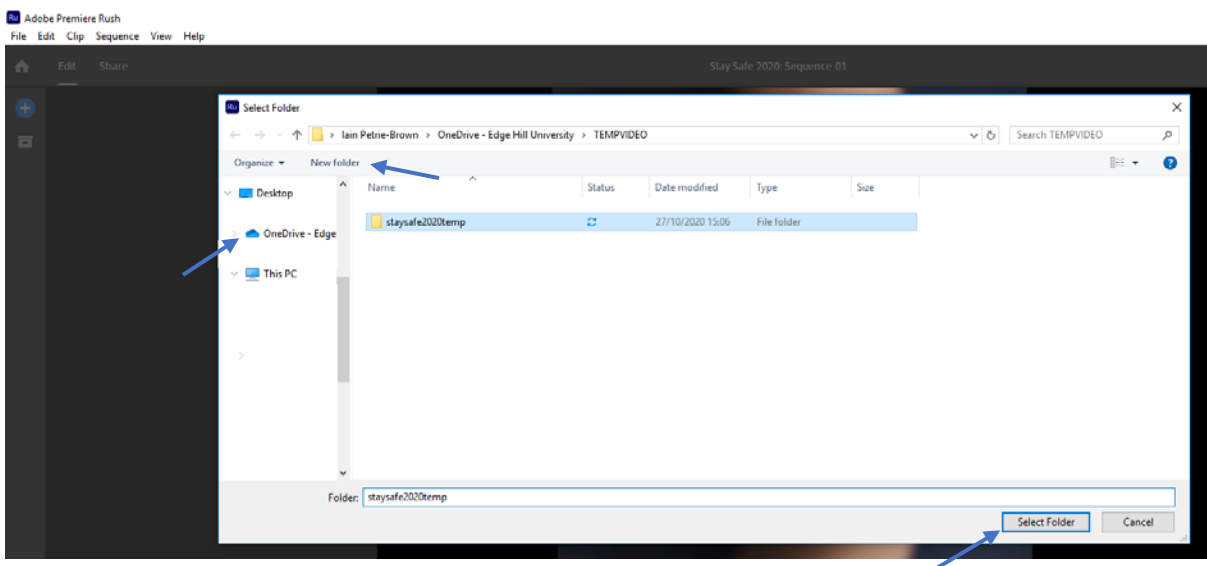
2. Click the blue **Create a New Project** button in Adobe Premiere Rush.



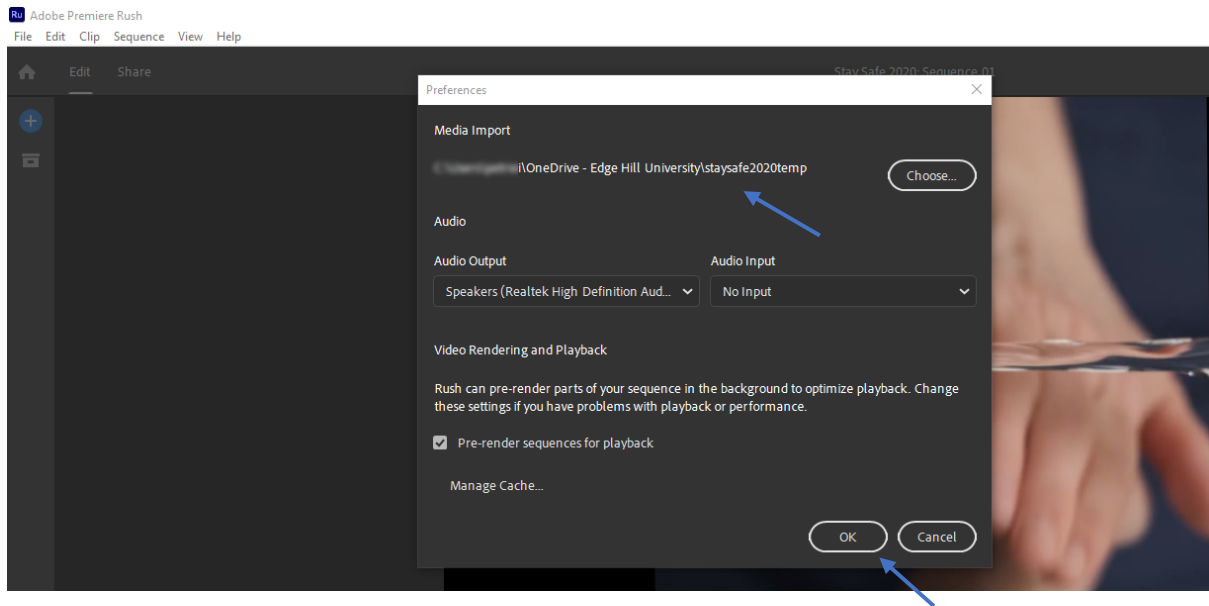
3. Click the blue **Choose** button displayed in the dialog box to select where the project files are to be located.



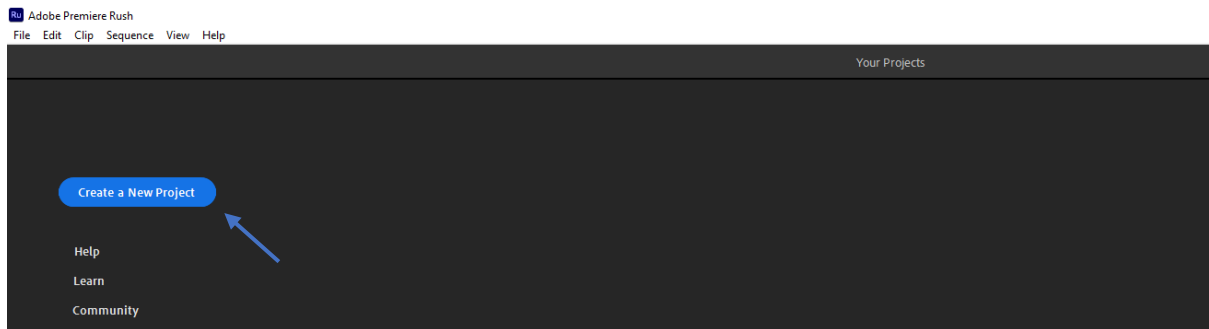
4. Create a **New Folder** in **OneDrive** with the **project's title** then click the **Select Folder** button.



5. Check the project location then click the **OK** button to complete the project setup process.

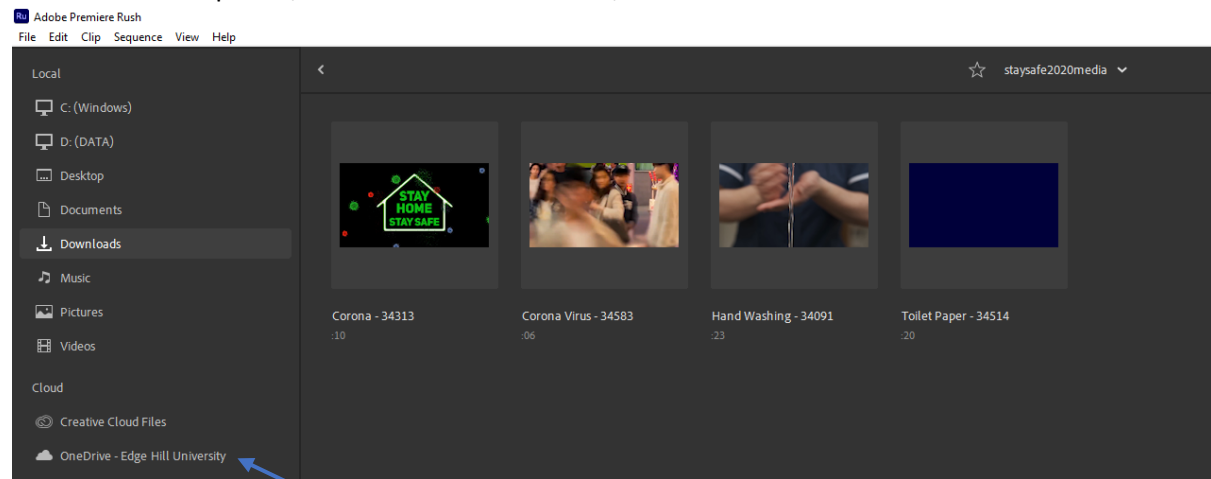


6. Click the blue **Create a New Project** button again to begin gathering media to create the project.



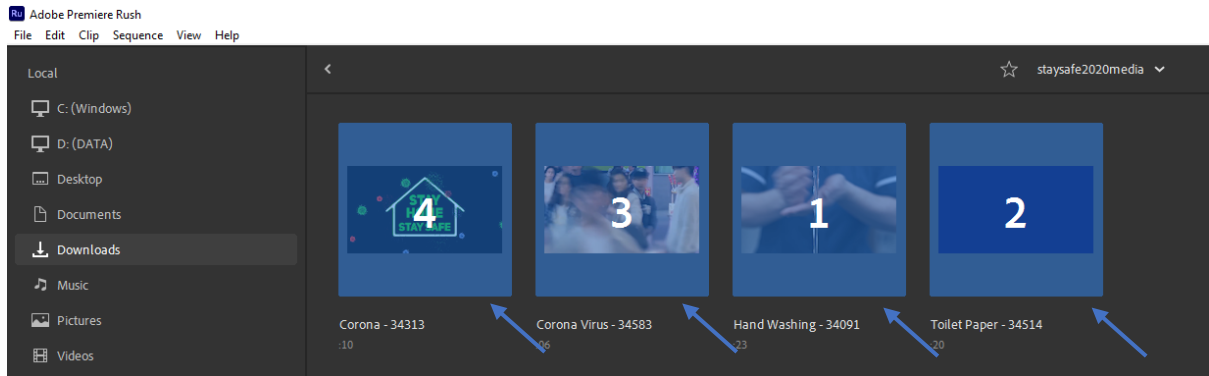
Navigate to the recorded media location

Navigate to where the **recorded media** is located, this may be Microsoft OneDrive, a portable device such as a mobile phone/tablet or an external drive/USB stick.

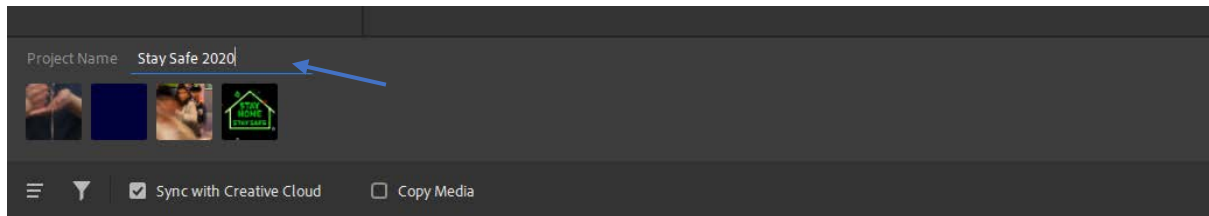


Select required media, name and create the project

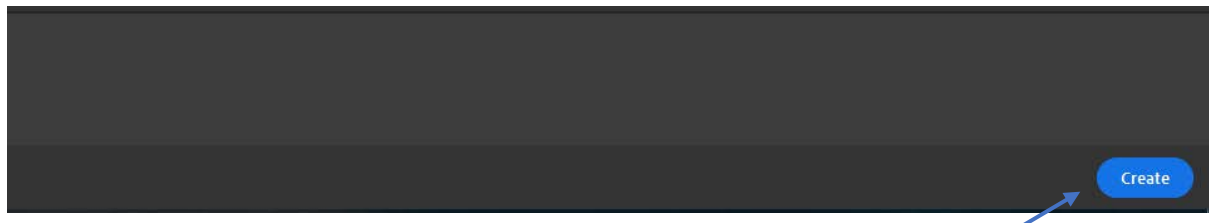
Hold down the **Ctrl** key then click the individual thumbnails representing the media files required.



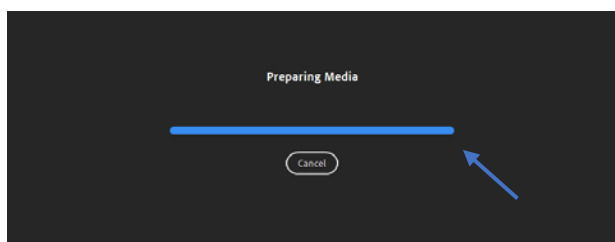
Click in the **Project Name** field and enter the project name.



Click the blue **Create** button

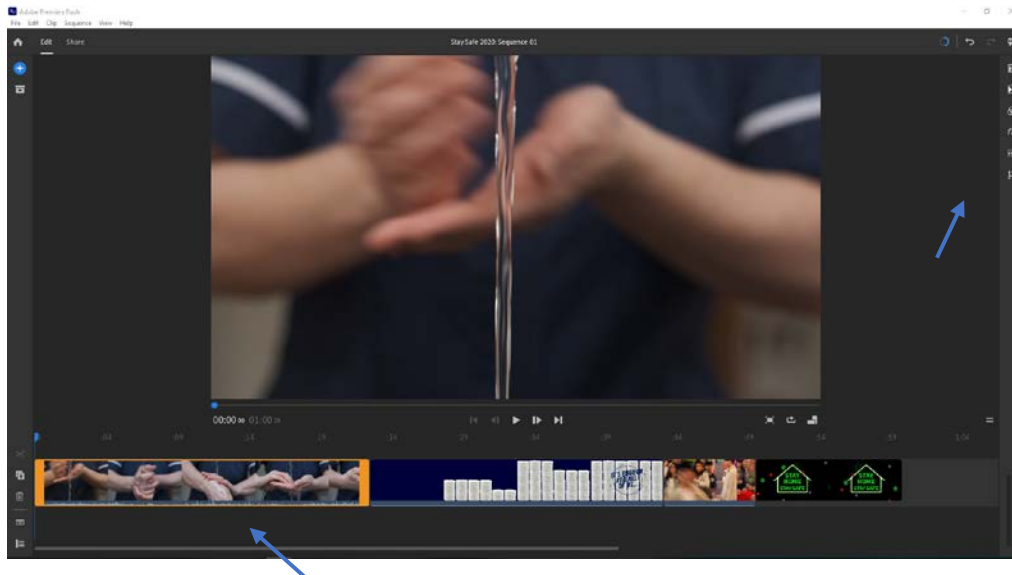


Adobe Premiere Rush will import the media files from the external location to the **New Folder** with the project name that was created earlier on OneDrive - this may take some time depending on the size of the video files, a blue bar is displayed to indicate import progress.



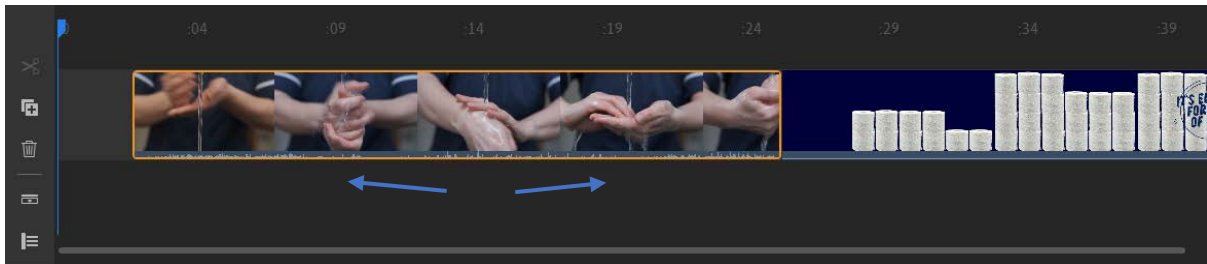
Edit media in the timeline

Editing media in Adobe Premiere Rush involves selecting and dragging individual clips to change the order they will play in, splitting clips into more than one part, deleting unwanted sections and selecting the icons available in the interface to apply various effects.



Re-order clips in the timeline

To **move** a clip, click in the centre of the required clip and **drag it left or right** and drop it into a new position on the timeline.



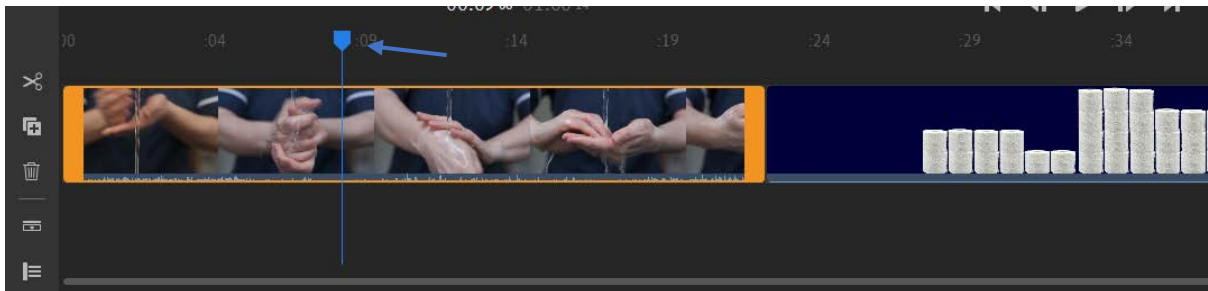
Trim a clip

To **trim** a clip, click and **drag the thick orange borders** at the start or end of the selected clip left or right.

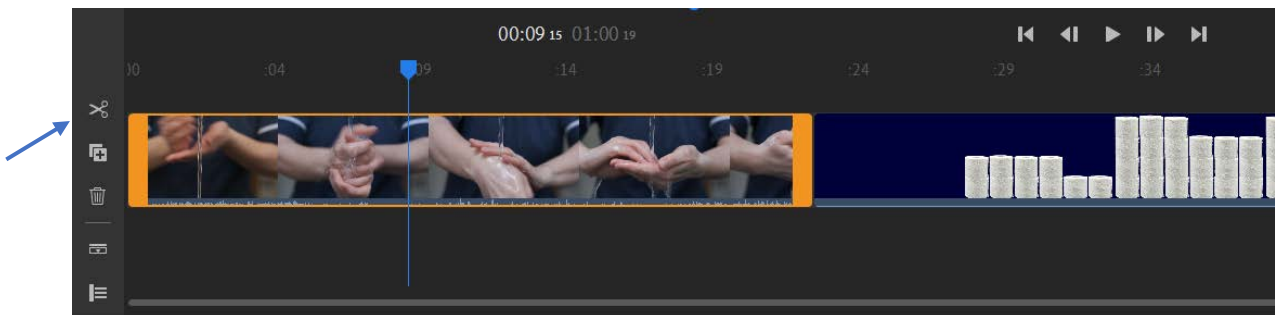


Split a clip

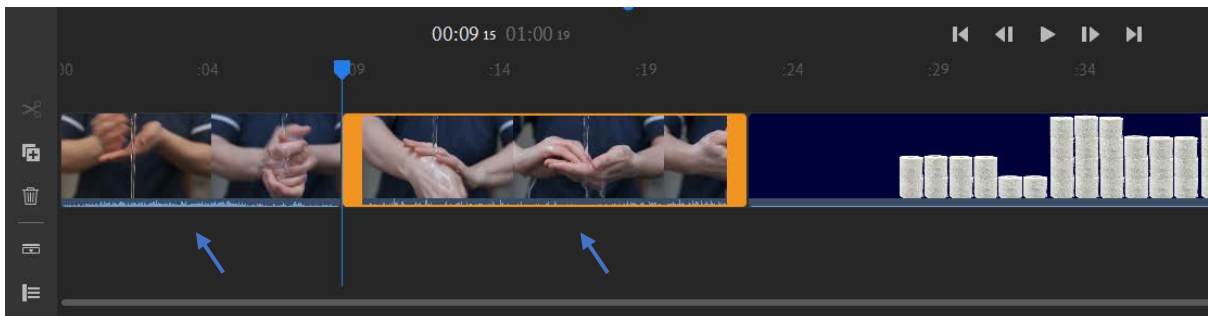
To **split** a clip, **drag the blue indicator** to the correct position...



...then click on the scissors (**Split**) icon to cut the clip in two.



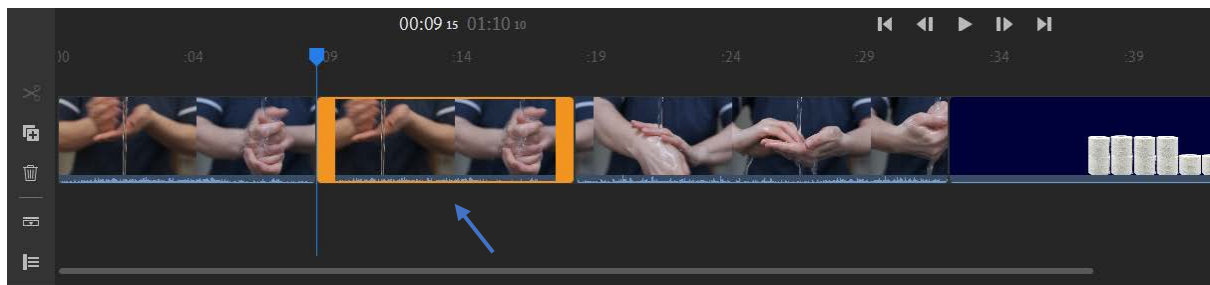
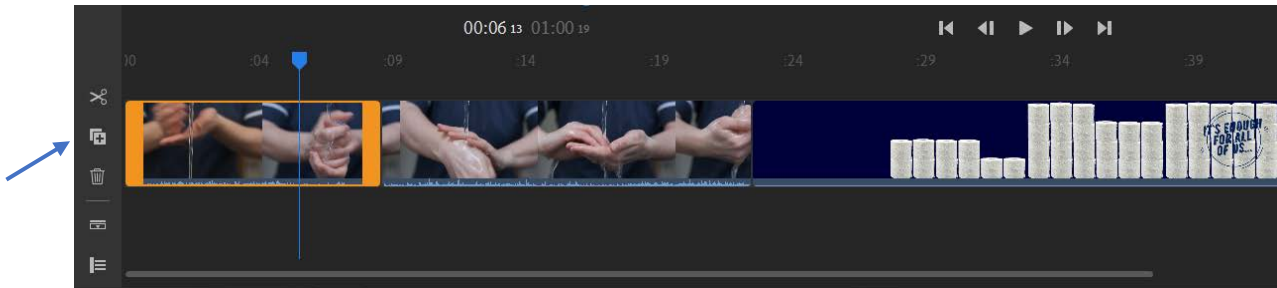
Once the clip is split each section becomes a separate clip.



Hint: Press the keyboard **left or right arrow keys** repeatedly to move the blue indicator one frame at a time. This will help ensure the cut is made at the exact position required.

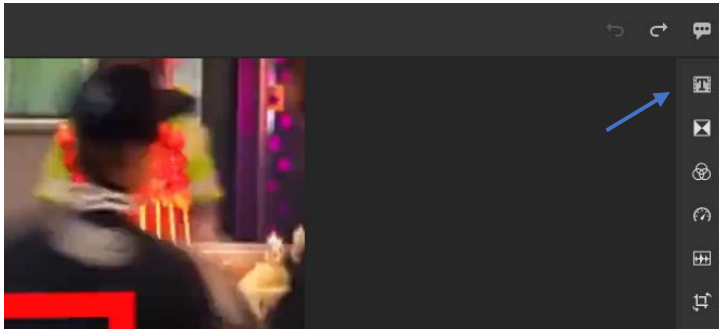
Duplicate a clip

To **duplicate** a selected clip, click the **Duplicate icon**, a copy of the selected clip will be added to the timeline **after** the original clip.

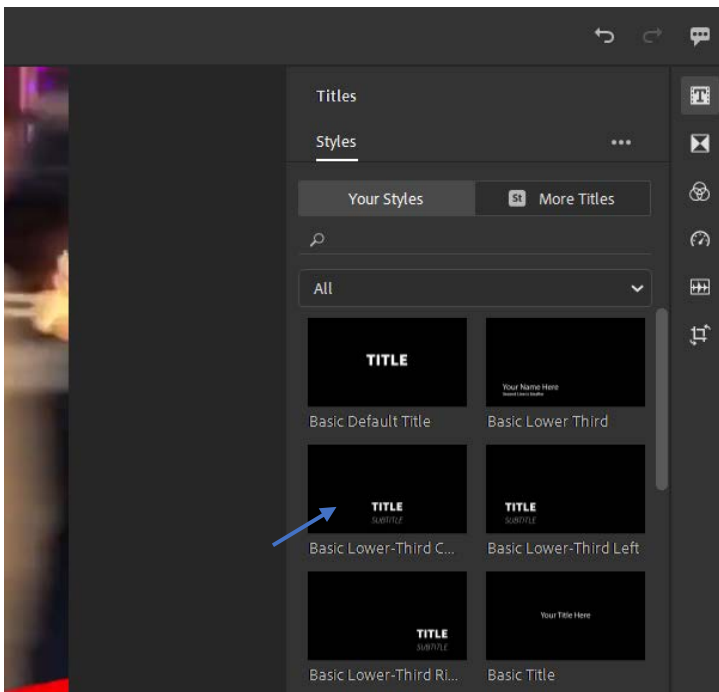


Add a title

Click the **Titles** icon in the top right of the interface.



Double-click a title design to add it to the timeline.

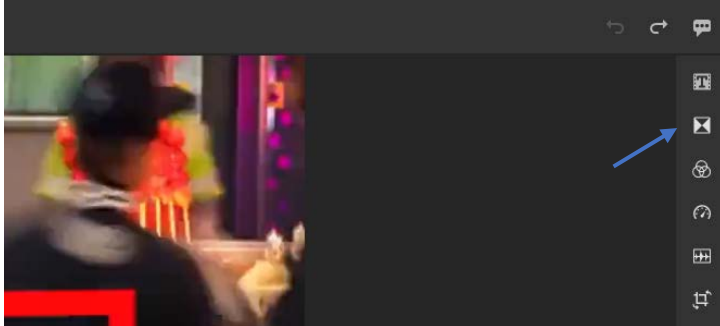


Use the editing options to change the text and style of the title.

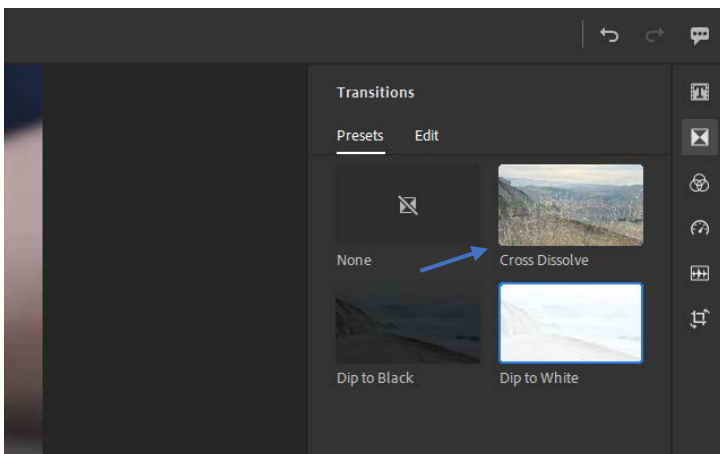


Add a transition

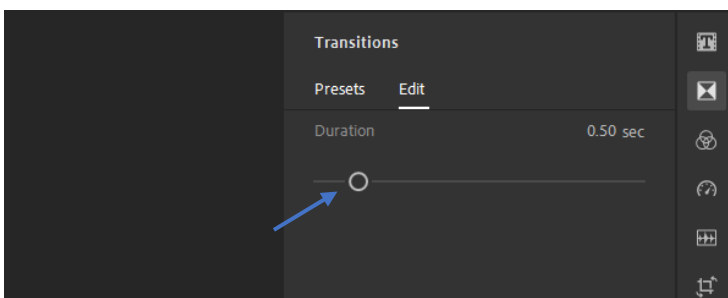
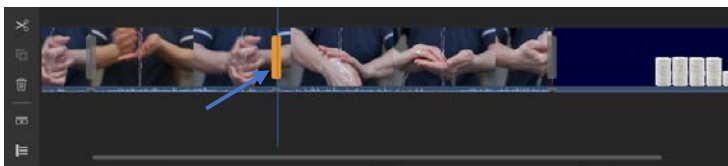
A transition provides a smooth join between two clips. Click the **Transitions** icon in the top right of the interface.



Select from the options provided. The transition will be applied at the end of the selected clip to make it smoothly join onto the start of the next clip.

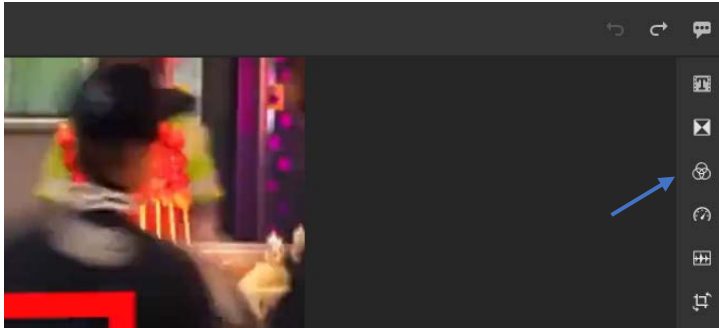


Double-click the transition on the timeline to edit its properties if required.

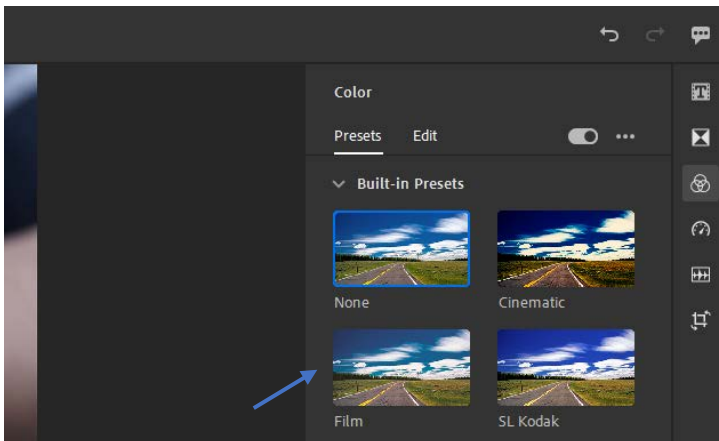


Add colour effects

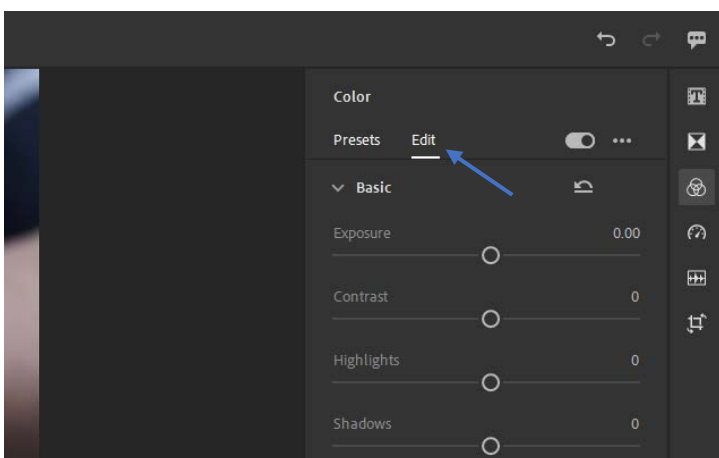
To add a preset colour effect or adjust the overall colour of a clip click the **Colour** icon in the top right of the interface.



Select one of the provided colour presets or...

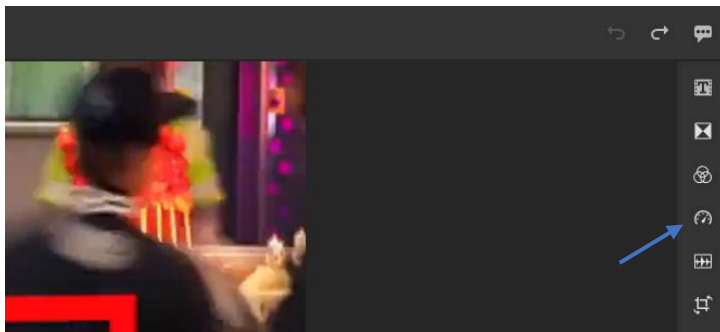


...click the **Edit** icon to adjust the colours manually.

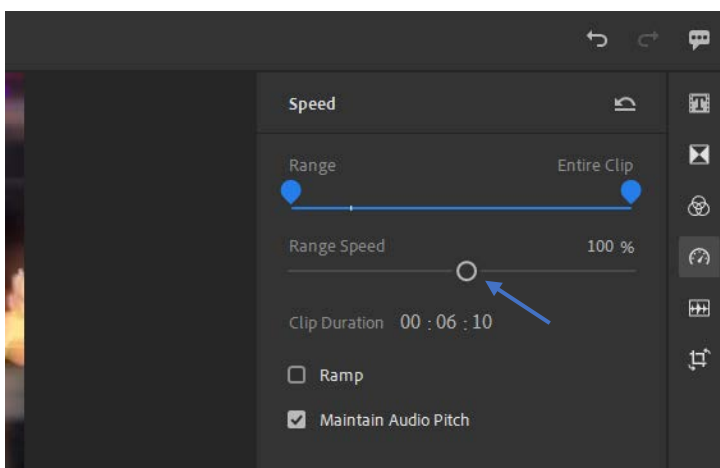


Speed up or slow down playback

To **speed up or slow** down playback of a clip click the **Speed** icon in the top right of the interface.

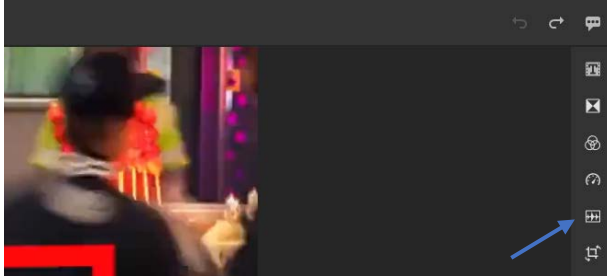


Drag the Range Speed adjuster to alter the speed of the clip, the length of the clip will change automatically to match - if the playback speed is increased the clip length will decrease and if the playback speed is decreased the clip length will increase.

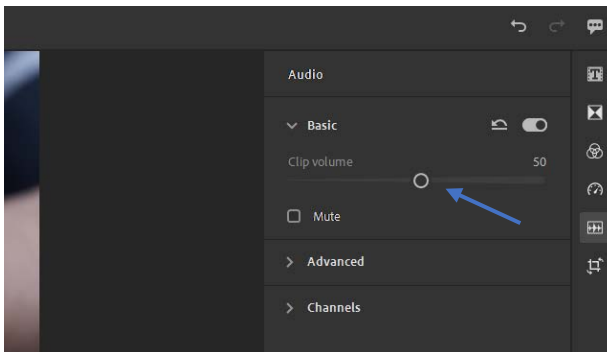


Adjust audio

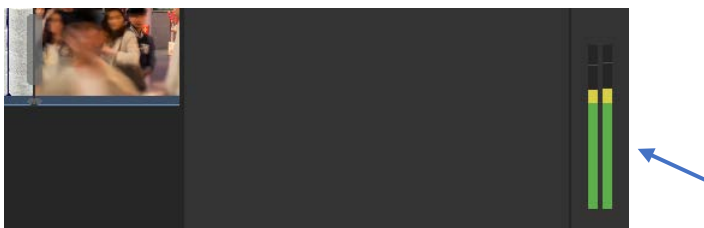
To adjust the volume of a clip or clips (hold down the **Ctrl** key to select multiple clips) click the **Audio** icon in the top right of the interface.



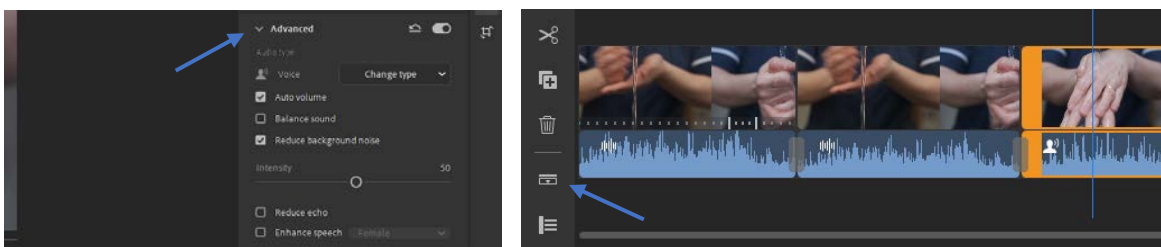
Adjust the volume level using the **Clip Volume** slider or other options.



Use the Volume Unit meters in the bottom right corner to monitor the audio, try not to let the volume level become too high (red section of meter) as distortion may occur.

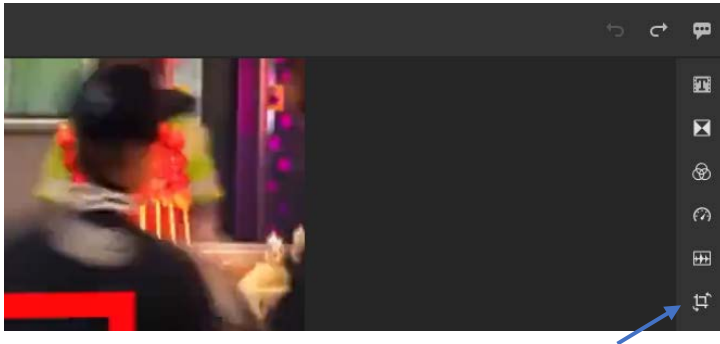


Click the **Advanced** icon for further options and the **Expand Audio** icon to see a representation of the audio levels in the timeline.

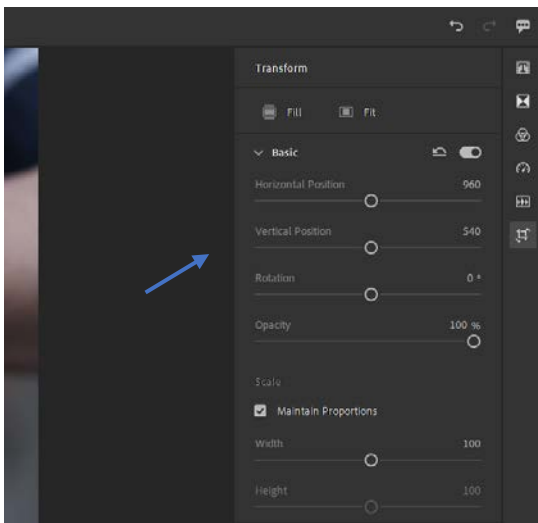


Crop or rotate a clip

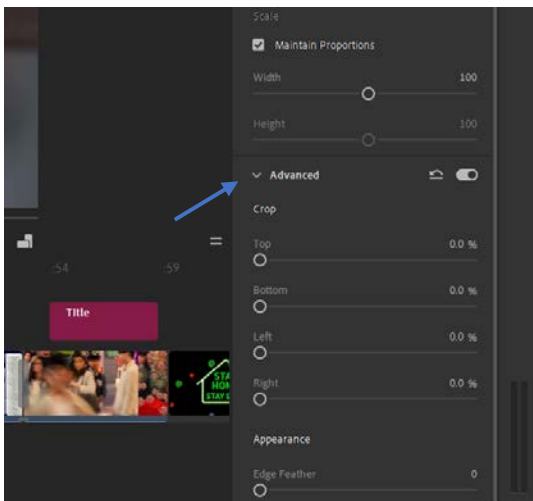
To crop or rotate a clip click the **Crop & Rotate** icon in the top right of the interface.



Use the **Basic** settings to **move** and **rotate** the clip...

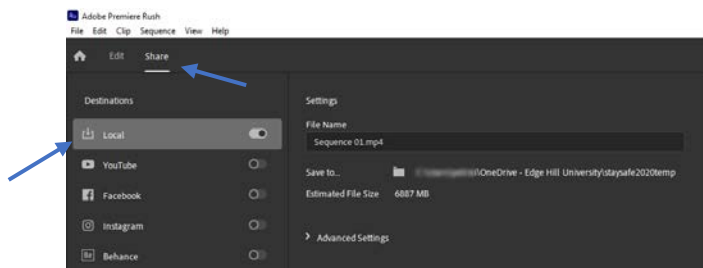


...or click the **Advanced** icon to **crop** the edges of the clip.

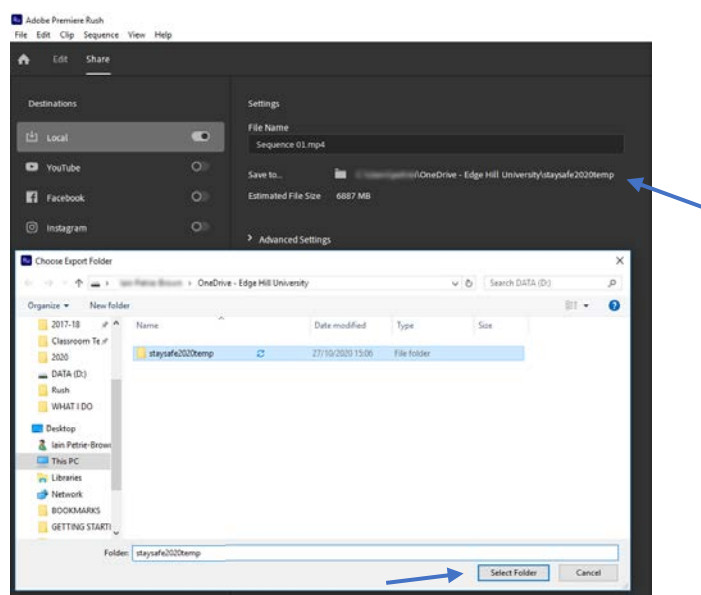


Export settings

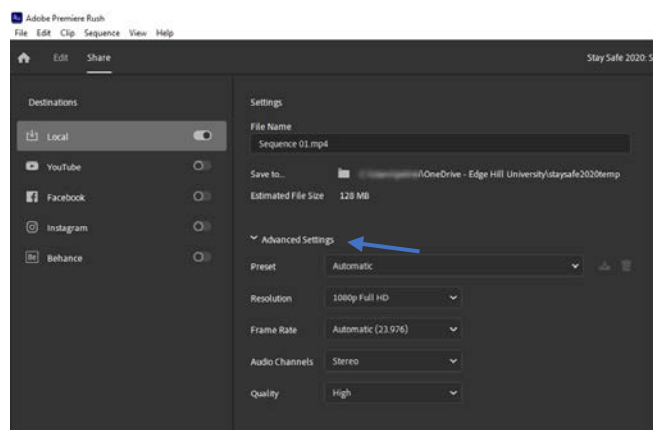
To save the edited media it must be exported to a destination with enough spare capacity to accommodate the new video file as it is being created (rendered). Click the **Share** icon in the top left corner to display the **export interface** then select the **Local** destination option.



Check the **Save to...** destination is set to the project folder created earlier on **Microsoft OneDrive** or click the link to navigate to the correct destination and click the **Select Folder** button.



The export settings are usually preset to the most appropriate parameters matching the resolution and frame rate of the original media and should not need altering however these can be adjusted if required. Click the **Advanced Settings** icon to display the extended export settings.

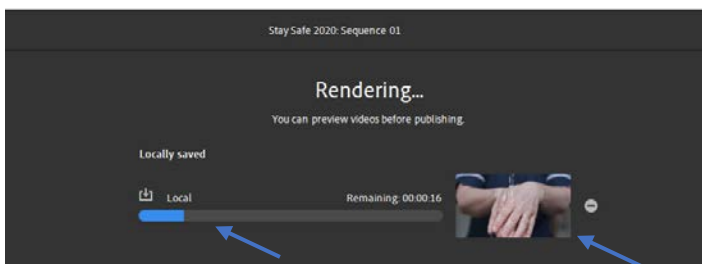


Create the new video file

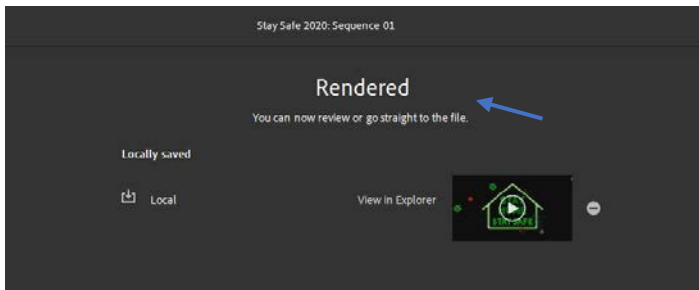
Click the blue Export button to begin creating (rendering) the finished video.



The rendering process can take some time depending on the size and quality of the video file and the specifications of the computer. A blue bar is displayed together with an estimate of the rendering time remaining – a small version of the final video is also displayed to make it easier to visualise rendering progress.

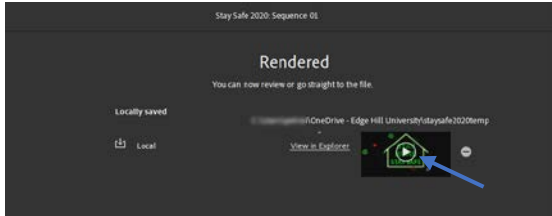


Adobe Premiere Rush will display the following message on completion of the rendering process.

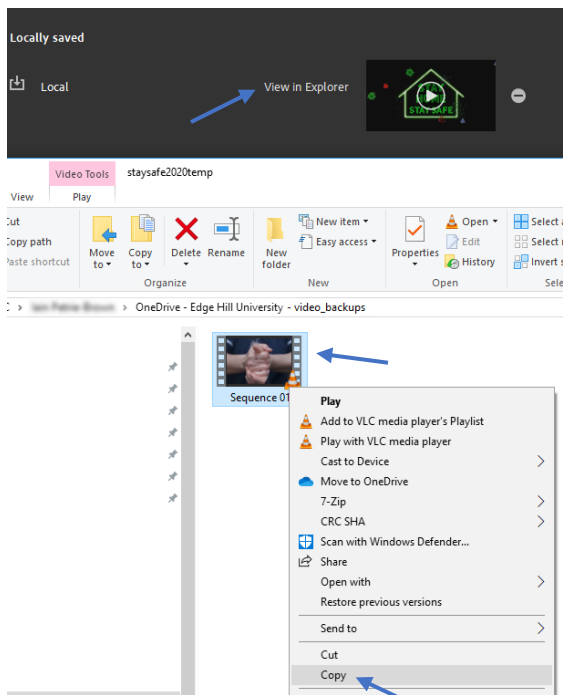


Check and create a backup copy of the video file

Click the **play button** to **check** the finished video - **play the video all the way through** to ensure it displays exactly as intended...



...then click the **View in Explorer** link. **Right-click** on the video icon or name and select **copy** from the context menu options. **Paste** the completed video into a **new folder** on **Microsoft OneDrive** called **video_backups**.



The video editing process is completed and the finished video file and backup copy are available on Microsoft OneDrive for use when required.