

Terms of Reference for the Institutional Health, Safety and Environment (HS+E) Committee

Purpose:

The purpose of this committee is to ensure that Edge Hill University (EHU) meets the commitments made in the institutional Health, Safety and Environmental Policy Statement in compliance with all relevant health, safety and environmental legislation.

The Committee will operate with integrity and full accountability for its actions and decisions which will be consistent with the values of EHU as a higher education provider. The committee will operate with due consideration of corporate risk management, ensuring the promotion of a sustainable operations.

In order to achieve this purpose, the committee will:

- Act as the decision-making forum for matters brought to the committee. This includes any items escalated from the other HSE committees and forums (as identified in the hierarchy on the following page)
- Monitor, review and act on information brought to the committee, including but not limited to the following:
 - New and updated legislation related to EHU activities
 - Any contact with regulators such as the Health and Safety Executive and Fire authority
 - New and updated policies and procedures related to HS+E
 - Results of internal and external audit activity
 - HS+E related performance data such as accident statistics
 - Status of strategies and progress of any ongoing objectives related to HS+E
 - Status of training and development of EHU staff, including mandatory health and safety training
 - Any items identified by other forums or sub-committees which are deemed necessary to escalate to this committee

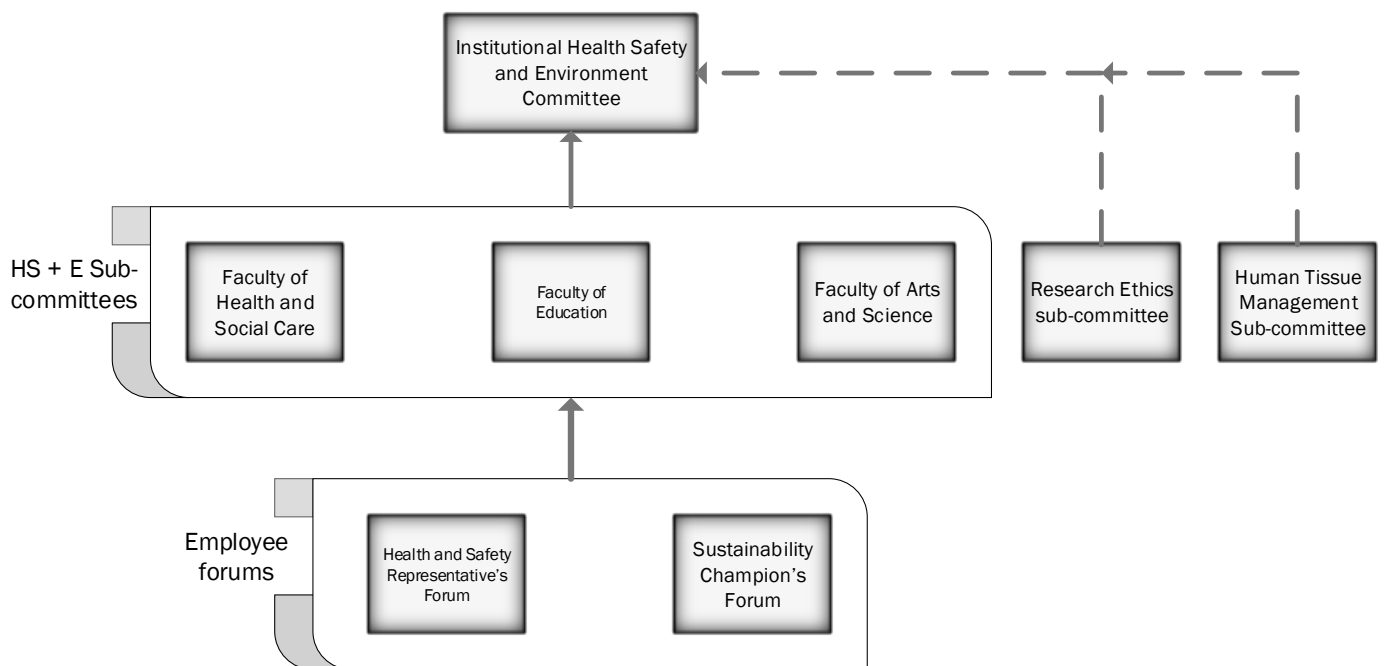
Information related to compliance with statutory requirements in relation to maintenance of the EHU estate

Membership:

Given the committee's strategic responsibilities, the membership must comprise colleagues with sufficient responsibility and accountability to make and enact decisions. As such, membership of the committee is as follows:

- Deputy Vice Chancellor (Chair)
- Director of Facilities Management (Deputy Chair)
- Director of Finance (or deputy director)
- Director of Human Resources (or deputy)

Director of IT Services
 Director of Capital Projects
 Operational Risk and Environment Manager
 Chair of the Research Ethics sub-committee
 Administration Manager for Faculty of Health and Social Care
 Administration Manager for Faculty of Education
 Administration Manager for Faculty of Arts and Science
 Student's Union representative
 Biological Safety Officer
 Occupational Health Nurse Advisor
 Health and Safety Manager
 Insurance/Compliance Officer
 Sustainability Manager
 Operational Risk and Environment Assistant (Meeting Secretary)
**Guests as appropriate and at the discretion of the Chair*



Meeting Hierarchy for Health Safety and Environment meetings as EHU